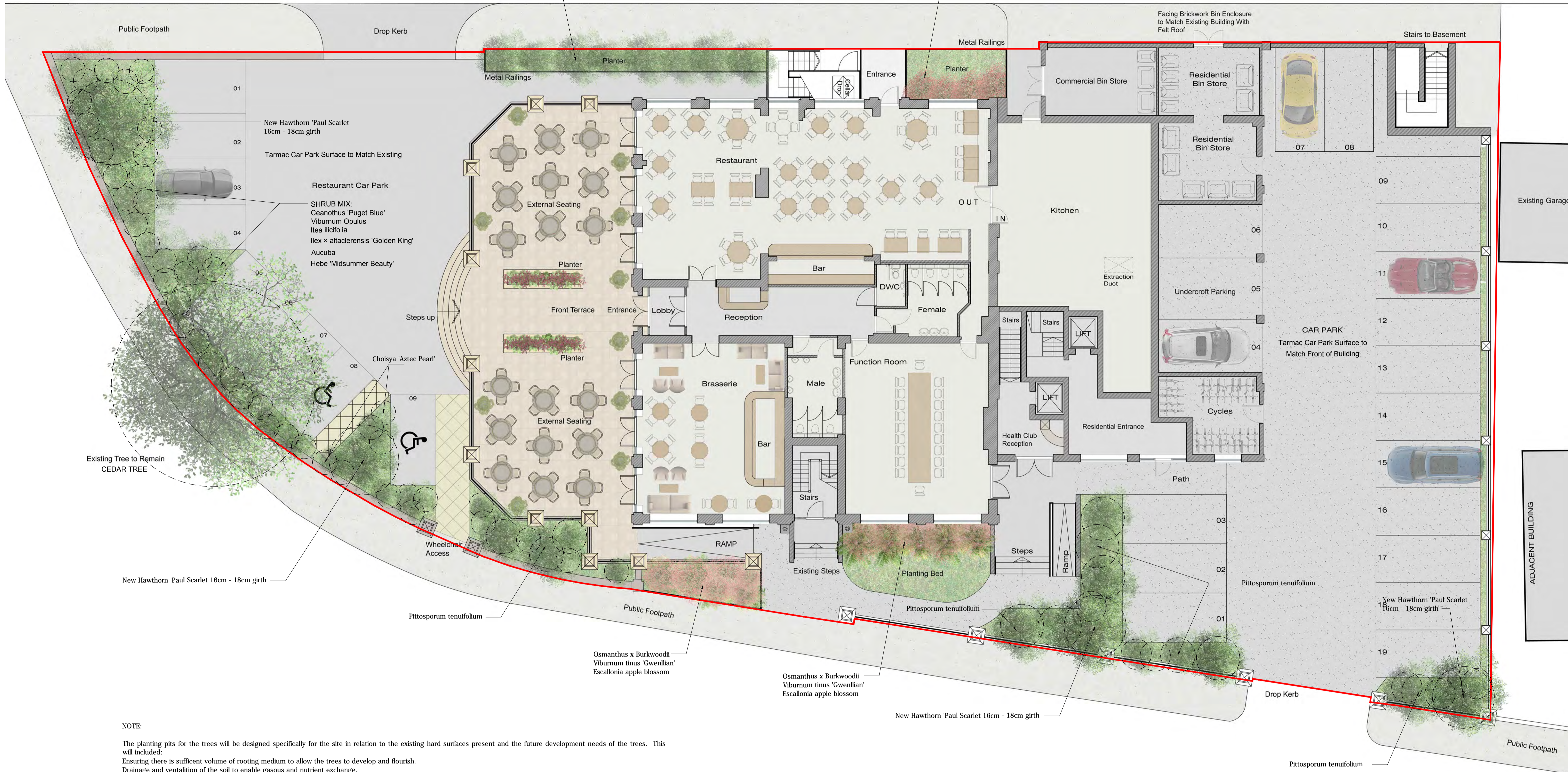


LEIGHTON AVENUE



NOTE:

The planting pits for the trees will be designed specifically for the site in relation to the existing hard surfaces present and the future development needs of the trees. This will include:  
 Ensuring there is sufficient volume of rooting medium to allow the trees to develop and flourish.  
 Drainage and ventilation of the soil to enable gaseous and nutrient exchange.  
 Under ground anchorage of root ball if required.  
 Water filtration system to ensure watering when required reaches all parts of the root spread.  
 Geo textile lining to ensure future root growth does not cause damage to adjacent structures to ensure long term retention of the trees

All trees and shrub plants supplied shall comply with the requirements of British Standard 3936, Specification for nursery stock.  
 All pre planting site preparation, planting out and post planting maintenance works shall be carried out in accordance with the requirements of British Standard 4428 (1989) Code of Practice for General Landscape Operations (excluding hard surfaces).  
 Shrubs to be of 5l - 10l size at time of planting, tree sizes as specified. All details relating to species number, size and specific variety to be confirmed and approved by council prior to work.

The aim of this scheme is to provide plants that will complement the site and surrounds, by providing seasonal interest with a combination of colours and sented foliage / flowers to enhance and soften the built environment.

Attention has been made to ensuring the plants specified do not have associated characteristics that may present conflict with users of the site or surrounds, such as soft fruits that could cause slip hazards when fallen onto pavements etc.

Security has also been considered to the rear of the site in the form of a native hedge, to ensure access on this boundary is not desirable. The species used will also be of ecological benefit to local wildlife by providing habitat and food sources for a variety of insects and birds.

SOFT LANDSCAPE PLAN

CLIENT: Stone Me  
 Architectural & Interior design

Project: THE GRAND HOTEL, BROADWAY  
 LEIGH-ON-SEA, ESSEX, SS9 1PJ

DATE: 21st January 2016

SCALE: 1:100



ANDREW DAY  
 ARBORICULTURALCONSULTANCY LTD

CREG NA BAA  
 BROOK ROAD  
 TILLINGHAM  
 ESSEX  
 CM0 7SG

TEL: 01621 779811 MOB: 0777 231 7770

EMAIL: andrewdayconsultancy@ajday.plus.com